

ROAD EDGE STEEL

Description:

For the most extreme and demanding public amenity applications, ROAD EDGE STEEL provides a permanent and durable edge for roadways, carparks and paved areas. Suitable for use with a wide range of substrates.

Available in 4 profile heights and with 4mm or 5mm thickness, it provides the definitive solution for contemporary landscape edging.

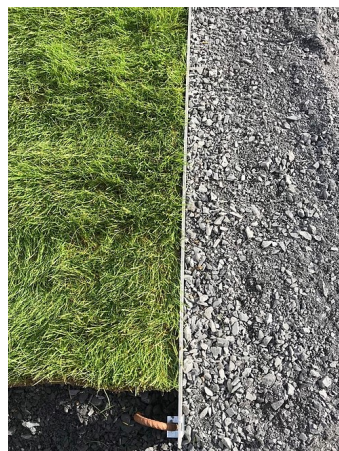
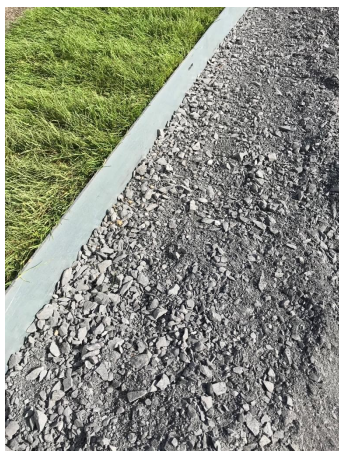


Applications:

- Paving
- Concrete
- Tarmacadam
- Resin bound gravel
- Heavy duty amenity
- Stabilized sand

Features:

- Heavy duty 4mm or 5mm
- Concealed fixings and joiners
- Permanent installation
- Fixing pegs can be set in concrete
- Does not rust, rot or crack
- Easy to install
- Labour saving
- Durable
- Very hard wearing



ROAD EDGE STEEL

Specifications:

Length	Height	Thickness	Double coupler	Anchoring pegs 600 x 80 x 10
2.30 lm	100 mm	4mm / 5 mm	1 included	2 included
2.30 lm	150 mm	4mm / 5 mm	1 included	2 included
2.30 lm	200 mm	4mm/ 5 mm	1 included	2 included
2.30 lm	250 mm	4mm/ 5 mm	1 included	2 included

Composition : Composition: Galvanized steel – DX51DZ275 – galvanization thickness from 16 to 22 μ
Also available in raw steel without galvanization.

Profile thickness: 4mm—Galvanized finish. 5mm - Raw steel finish.

Fixing method: 1 x double coupler and 2 x fixing pegs per length.

Colours:



Galvanized

Optional accessories :

Single coupler

Up to 2 per each 2.30lm length

Anchoring pegs

Material : Steel

Dimensions : 600 x 80 x 100 mm - Diam 10 mm



LANDSCAPEDEPOT.IE

W: landscapedepot.ie

E: Info@landscapedepot.ie

Ph: 01 4512608

Landscape Depot
Bally mana Lane
Kiltipper
Dublin 24
D24 T9FE