

Gripdex Trojan Anti-Slip Profile

Product Guide Anti slip strips & nosing



Decking Inserts



GRP Beige coverstrip



GRP Black Coverstrip

Gripdex Trojan Anti-Slip Profile

Product Guide Anti slip strips & nosing

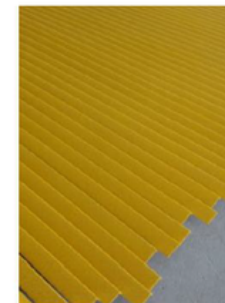
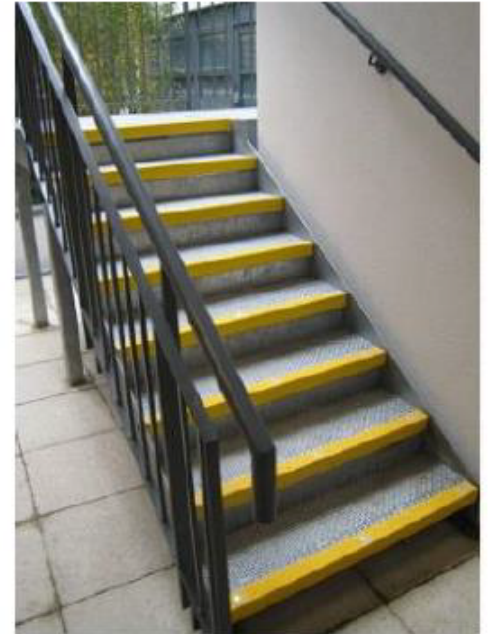


DESCRIPTION:

Fiberglass anti-slip products are built to withstand even the most demanding environments. Constructed from a durable fiberglass base, they are reinforced with a high-grade vinyl ester resin coating for added strength and resilience. The surface is embedded with robust aluminum oxide grit, delivering exceptional slip resistance that endures for years. These products are specifically designed for both new installations and retrofitting on concrete, metal, and timber surfaces, prioritizing pedestrian safety, durability, and aesthetic appeal.

Characteristics:

- Fiberglass stair nosing and strips achieve an R13 anti-slip rating.
- Coated with premium-grade epoxy vinyl ester resin for enhanced durability.
- Supplied with medium aluminum oxide grit, with fine or coarse options available upon special request.
- Standard colors are black and yellow, with white, green, red, and grey offered as custom options.
- Standard lengths include 1m and 2m, with custom lengths available by special order.
- Backed by a 5-year manufacturer's guarantee under normal usage conditions.
- Can be installed using adhesive or by drilling and screwing, suitable for areas with high foot traffic.



Gripdex Trojan Anti-Slip Profile

Product Guide

Anti slip strips & nosing



Installation Guide

Suitability:

Customers must ensure that the products ordered are appropriate for their project and intended purpose. When cutting or installing GRP products, standard personal protective equipment (PPE) is required, including goggles, gloves, a dust mask, and suitable workwear, including protective footwear.

Preparation:

- Ensure the surface is clean, dry, and free from rot (for timber), rust (for metal), oil, grease, moss, or mold, especially for outdoor installations.
- Verify that the surface provides a solid connection for the GRP product. Repair any loose or damaged areas to create an even surface. Small undulations can typically be managed by applying additional adhesive where needed.
- When cutting GRP, work in a well-ventilated area. Use an angle grinder with a suitable disc or a jigsaw with a tile-cutting blade, cutting with the smooth side facing up.

Fixing:

- For secure installation, use an MS Polymer adhesive, such as GRIPDEX Clear Decking Adhesive, in combination with mechanical fixings (screws or bolts), especially in high-traffic areas.
- Apply adhesive in zig-zag patterns and run a bead along the angle between the tread and downturn for angles and nosing. A primer may be necessary for deck strips.
- Leave a 3–4mm gap between adjacent strips or panels for expansion and contraction, filling the gap with mastic. A single 290ml adhesive tube covers approximately 3–4 treads (1000mm x 300mm) or 1.5–2m² of flat panel.
- When using screws or bolts, drill holes 45mm from edges in corners and along edges at 500mm intervals for larger sheets. Ensure holes are properly countersunk and drilled from the ungritted surface to avoid snagging.

Gripdex Trojan Anti-Slip Profile

Product Guide Anti slip strips & nosing



Maintenance:


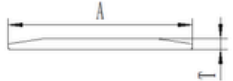
- GRP products are highly durable and require minimal maintenance. Periodic cleaning is recommended to maintain optimal slip resistance. Frequency depends on site-specific traffic levels.
- Use a stiff brush and hot soapy water for general cleaning or a diluted detergent for tougher marks. Test detergents on a small area beforehand.
- If suitable, clean the surface with a low-pressure washer, ensuring the nozzle is set to “spread” and kept approximately 300mm from the surface to avoid damaging the grit.
- Annually inspect adhesive and fixings to ensure the product’s longevity.

Seasonal Notes:

- Anti-slip products like salt can be used in frost and snow without harming the GRP. However, they may affect fixings or adhesive over time.

Disclaimer:

This guide provides general advice and is not exhaustive. Always ensure proper installation and maintenance based on specific project requirements.

Product	Dimension (A x B x T)	Gram/meter	Sketch
Stair Nosing	40x25x4mm	480	
	50x30x4mm	580	
	70x10x4mm	580	
	70x30x4mm	720	
	152x25x4mm	1530	
	228x25x4mm	2210	
Stair Tread Cover	55x55x4mm	810	
	345x55x4mm	3730	
Flat Strip	50x4mm	360	
	90x4mm	650	
	120x4mm	860	